



THE TURN OF PERFECTION!

TUBA



JUST 'TU' GOOD

TUBA modular workstations are unparalleled in design, comfort, and functionality, transforming the modern workspace. This entire series has been modelled on three design principles – **Employee Well-being** in terms of good ergonomics and sleek looks; **Choice** in terms of an extensive color palette and arrangement, and **Fluidity** in terms of adjustability as the workspace expands in the future.





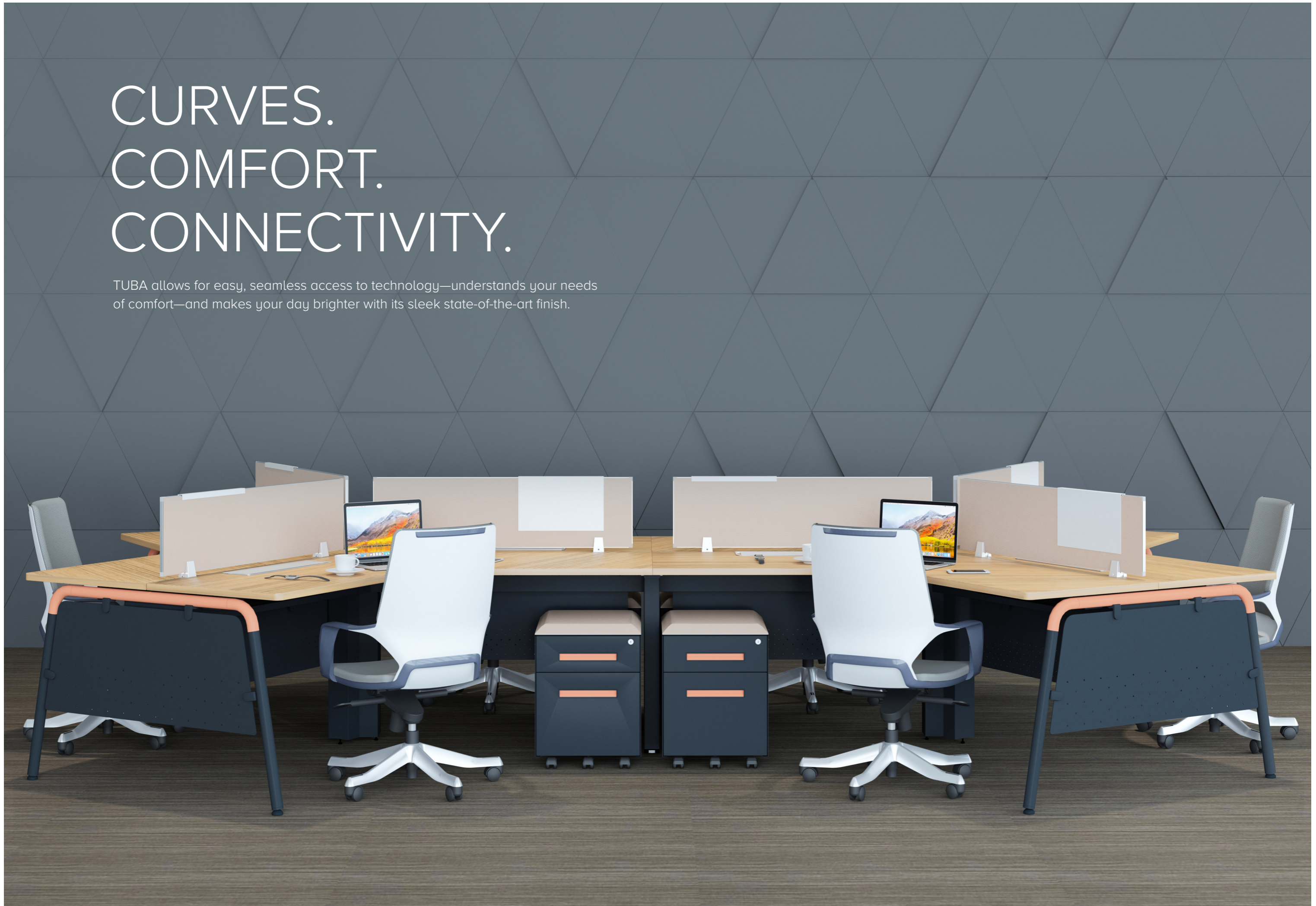
IN TUNE WITH THE TIMES

Imagine a design so elegant and harmonious that you can play it like a flute! Yes, a contemporary look that breaks away from rigid rectangular spaces and frees the workflow, while freeing the mind. Modern workspaces are more than just real estate or the desk and table. An ideal workspace should attract, inspire, and raise productivity levels. Our workspace solutions are created to 'break the mold', to usher in a metamorphosis.



CURVES. COMFORT. CONNECTIVITY.

TUBA allows for easy, seamless access to technology—understands your needs of comfort—and makes your day brighter with its sleek state-of-the-art finish.





CHOOSE THE CURVES YOU LOVE

The design of TUBA circular profile and end legs are available in angular and straight configurations made from Aluminum as per choice.



SLEEK DESIGN WITH SEAMLESS FINISH AND STRUCTURAL RIGIDITY



SCALABILITY & ADAPTABILITY TO MEET EVOLVING ORGANIZATION'S NEEDS



SUSTAINABLE & STRONG ECO-FRIENDLY MATERIAL



EPIC BUILT WITH 10-YEAR WARRANTY





SIMPLE TO SIMPLY BRILLIANT

In its sleekness lies a unique blend of simplicity and beauty. TUBA offers a portfolio of modular tubular leg profile with laminate options that makes you rethink how the private office can be designed to address today's needs.

BE READY FOR TUMORROW

TUBA is literally designed for tomorrow. Being highly customizable and scalable it makes way for organizations to smoothly adapt to expanding workspaces while at the same time creating an aesthetically pleasant work environment irrespective of space constraints. TUBA can be easily assembled, reassembled, and adjusted making it stand out from other brands in the same design space.



INTUITIVE WORKSPACES

TUBA has an inherent openness integrated into the design. It accounts for more desk space that adds to the 'freedom' in a typical office environment. Overall, TUBA workspaces allow for personalization along with taking care of storage space.



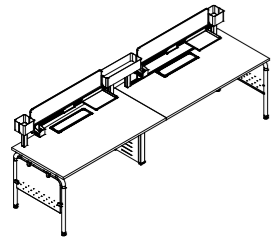




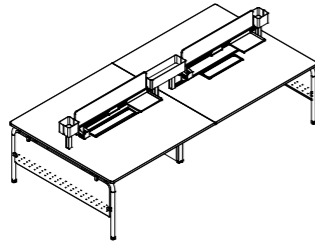
TUBA CONFIGURATION

STATEMENT OF LINE

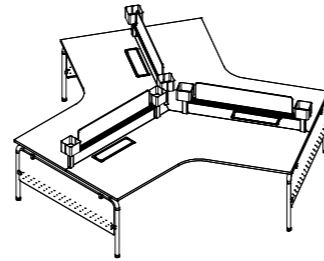
LINEAR CLUSTER



SINGLE BENCH

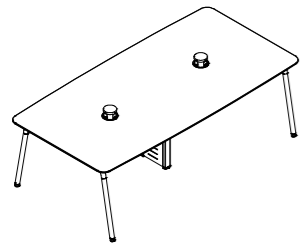


DOUBLE BENCH

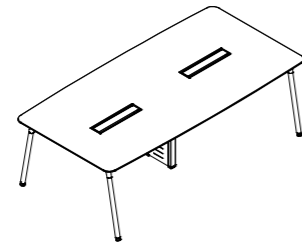


120° DOUBLE BENCH

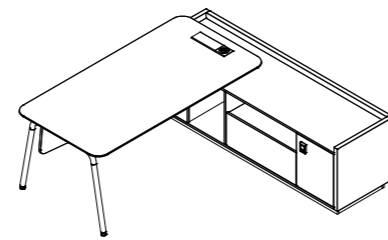
CONFERENCE & CABIN



CONFERENCE WITH POP UP

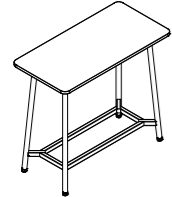


CONFERENCE WITH FLIP UP



EXECUTIVE CABIN

DISCUSSION TABLE



HIGH RAISE TABLE

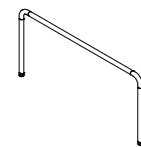


TRIANGLE TABLE



ROUND TABLE

LEG OPTION



STRAIGHT LEG

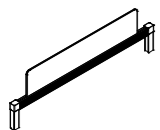


DUAL SLANT LEG

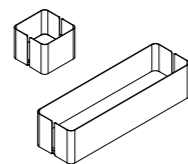


SINGLE SLANT LEG

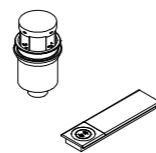
ACCESSORIES



SCREEN

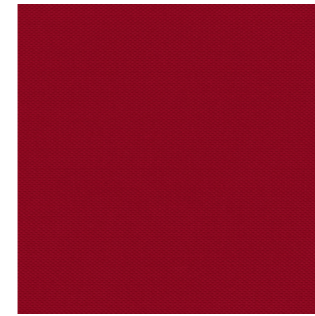


PLANTER

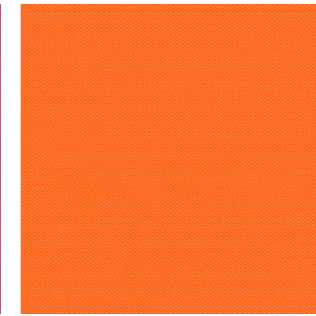


POWER SOCKET

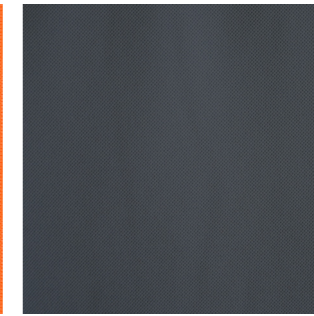
FABRIC



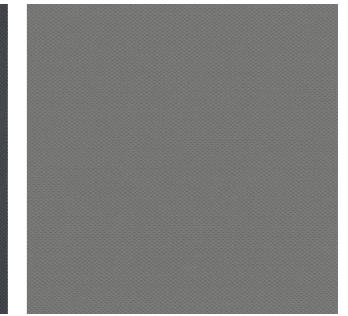
F- A01 Red



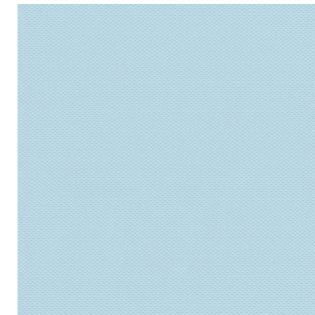
F- A02 Dago Orange



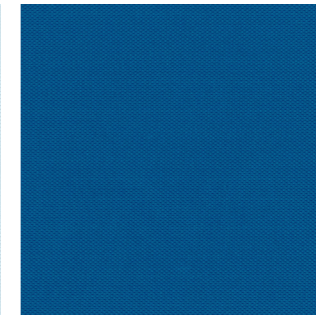
F- A03 Dark Grey



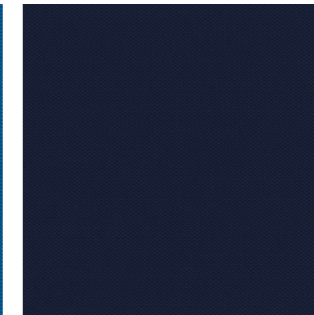
F- A04 Lightr Grey



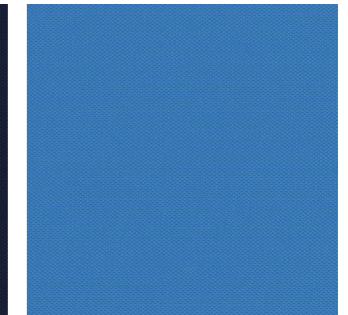
F- A05 Baby Blue



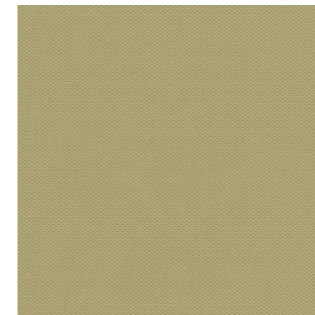
F- A06 Royal Blue



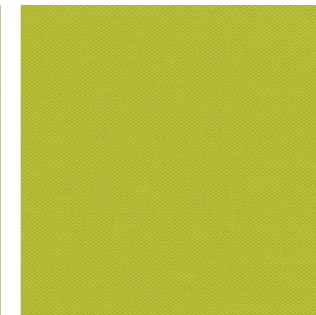
F- A07 Navy Blue



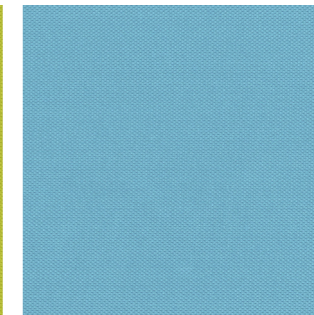
F- A08 Blue



F- A09 Rockpot Grey



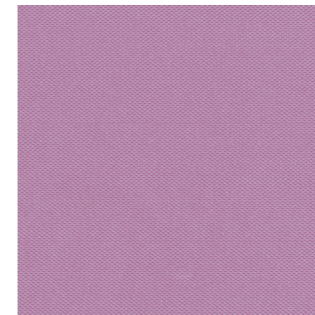
F- A10 Green



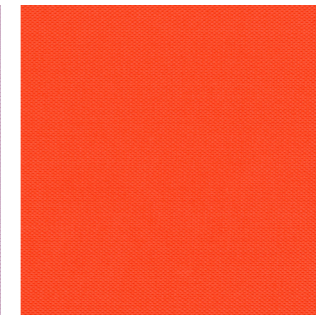
F- A11 Light Blue



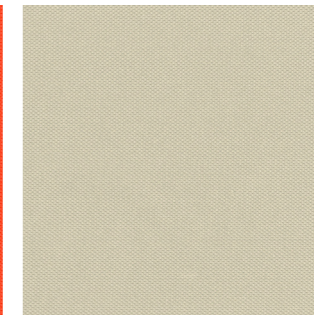
F- A12 Lemon



F- A13 Lavender



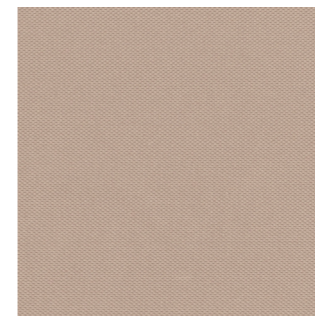
F- A14 Orange



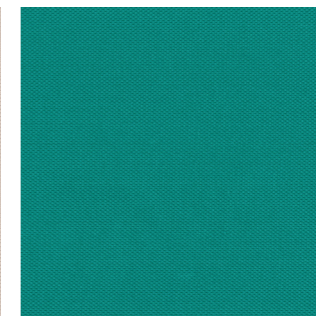
F- A15 Clouds



F- A16 Yellow



F- A19 Mink



F- A20 Bramble

LAMINATES



9001 Everest White

9002 Silver Grey DY

9003 Slate Grey DY

9004 Mocha Brown

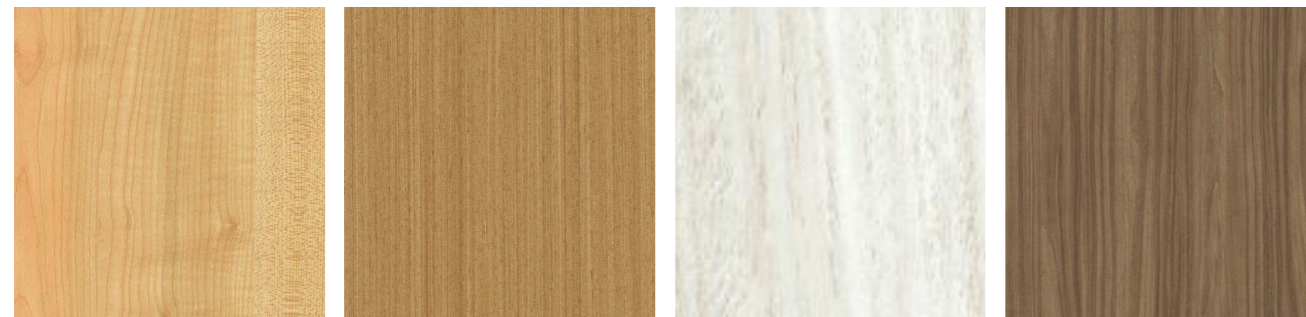


9005 Persian blue

9007 Olive

9014 Moldau Acacia Dark

9015 Moldau Acacia Light

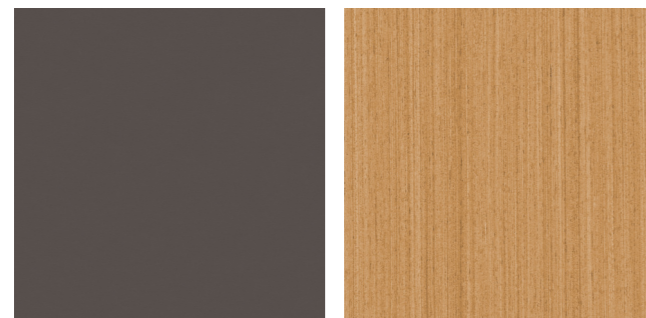


9018 Thansu Maple

9019 Elegant Teak

Eucaly Busto 9022

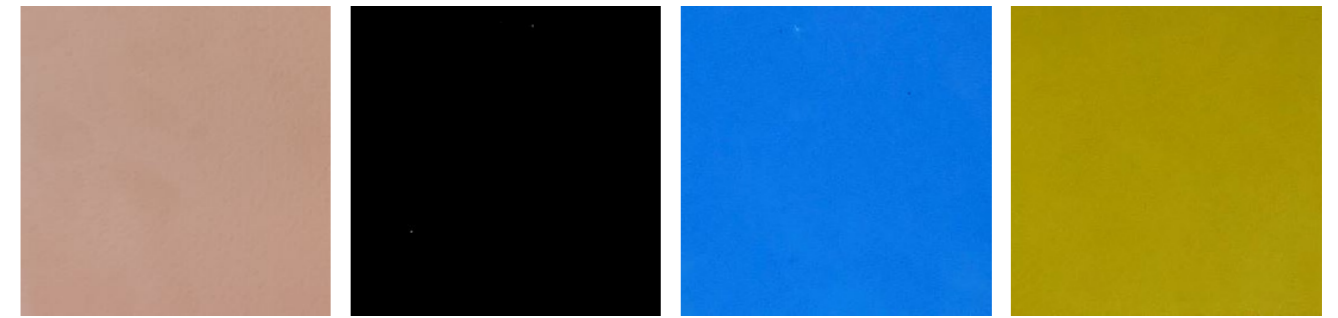
Eucay Como New



Midnight Gray Small

Modish Teak 9023 New

METAL PC

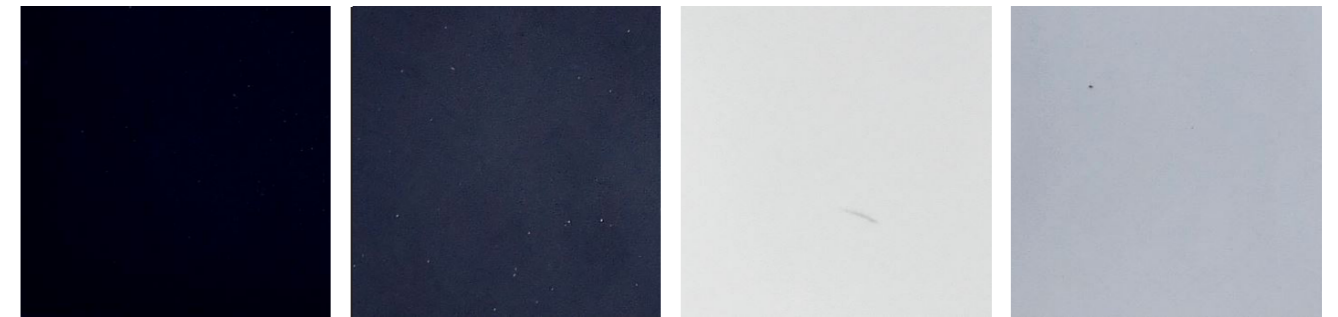


Beige Ref

Black

Blue

Curry

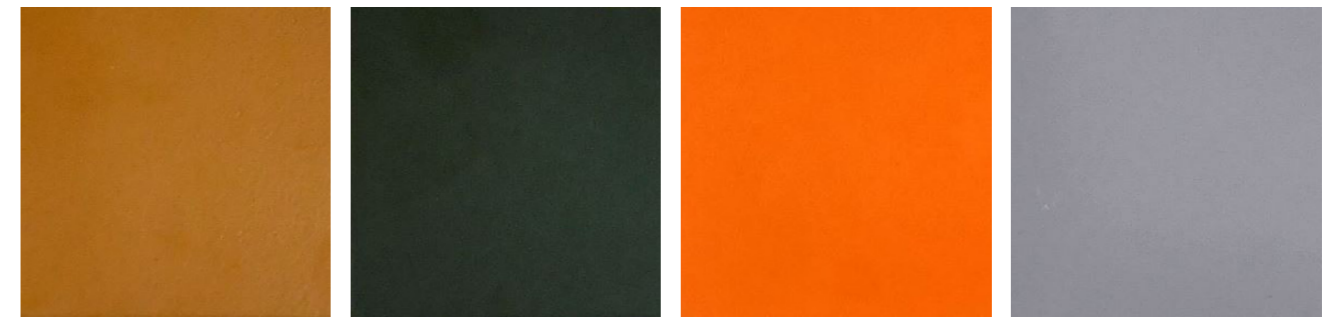


Euro Grey

Graphite Grey

Grey White

Nimbus

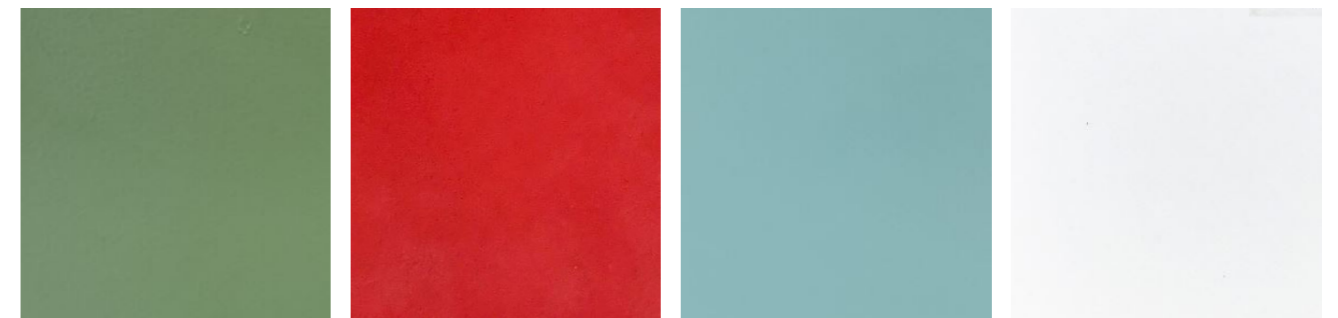


Ocher Brown

Olive Green

Orange

Platinum



Raseda Green

Red

Tourquoise

White



Yellow

MONARCH

Global WorkSpaces. Crafted in India.

Corporate Office: Monarch Ergo Pvt. Ltd.
304, Bhuvana Towers, S.D. Road
Secunderabad - 500 003, Telangana, India

V +91 970 111 6999
D contact@monarchergo.com

INDIA

Ahmedabad | Bengaluru | Chennai | Delhi NCR | Hyderabad |
Kochi | Kolkata | Mumbai | Pune | Vijayawada

OTHER COUNTRIES

California (USA)